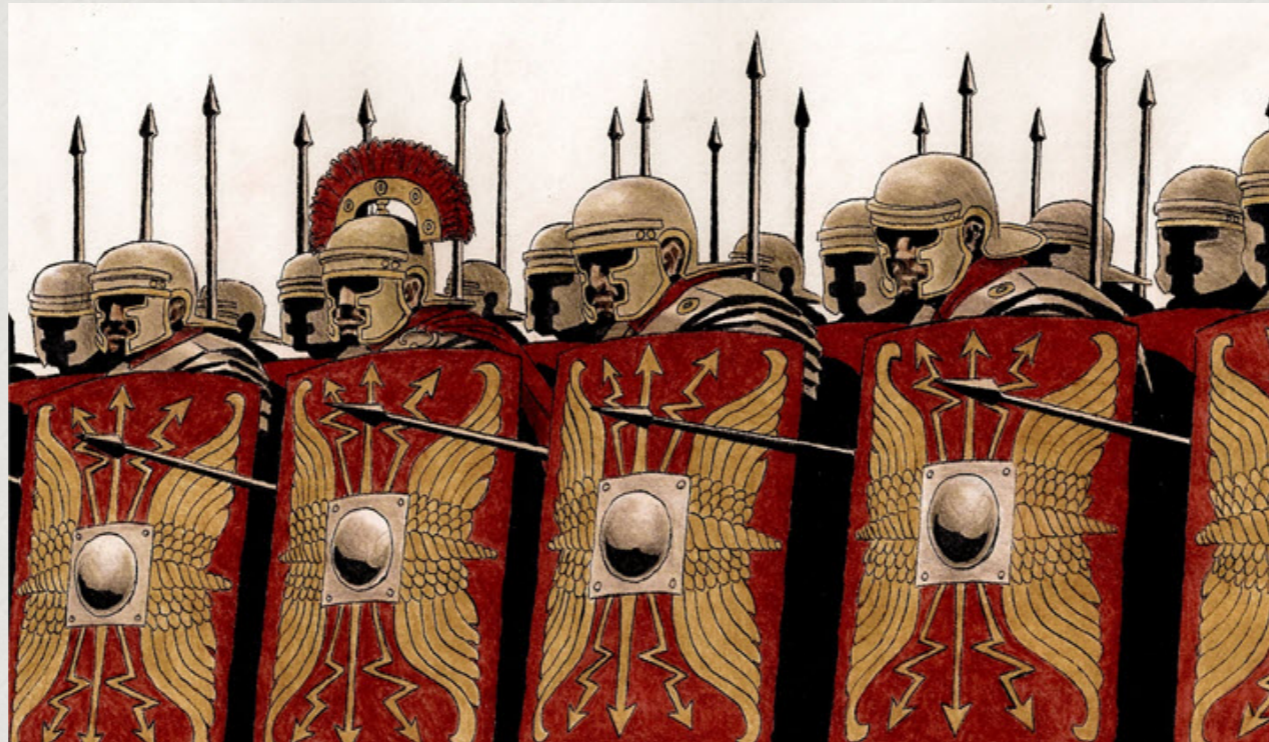


The Roman Civilization



By Alex

What is the Roman Civilization?



The Roman Civilization started in 550 BC and ended in 465 B.C. It started in the village of the Latini, in the country that is now Italy.

Which countries did the Romans take over?



The Romans started in the village of the Latini.

The Roman took over countries such as Britain, France, Spain, North Africa, Italy and parts of Asia. It was almost as big as China. Rome was the capital city of the Roman Civilization.

What are some famous Roman buildings?



The famous buildings are the Colosseum, Madison Carrèe and Alcantara Bridge. The Colosseum is a big circular building where lots of people had fights with each other. It was built in 70 AD.

Madison Carrée



*The Madison Carrée is a good place to pray. It was built
in 2AD.*

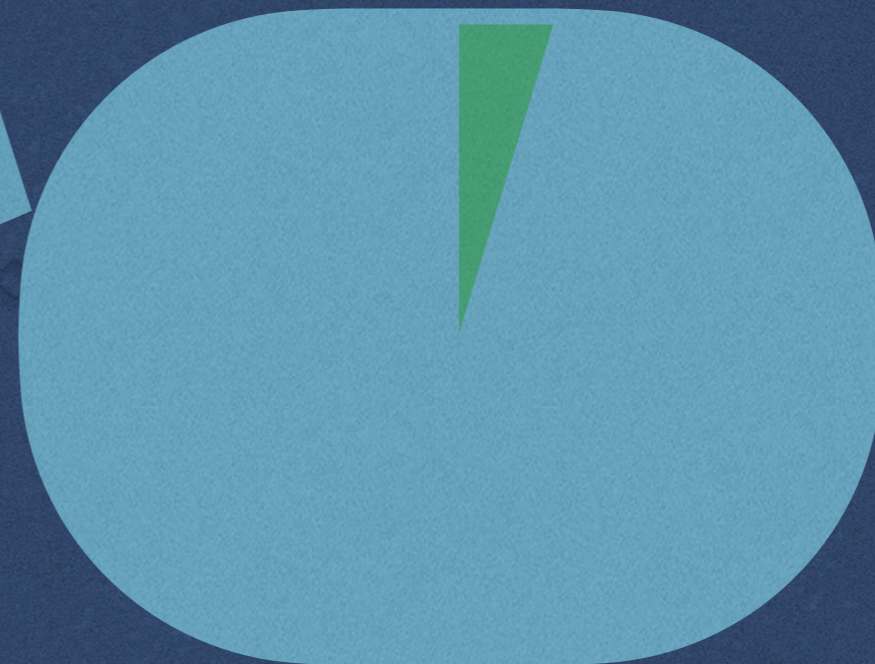
Alcántara Bridge



The Alcántara Bridge is a very big bridge in Spain. It is very beautiful so you can take pictures there. It is 181m long.

The population of the Roman Civilization.

Roman population .



*The population was about 8 million people.
It was 20% of the Earth's population.*



Question time!



Where did the Roman Civilization start?

A

Yikhb village.

B

Latitv village

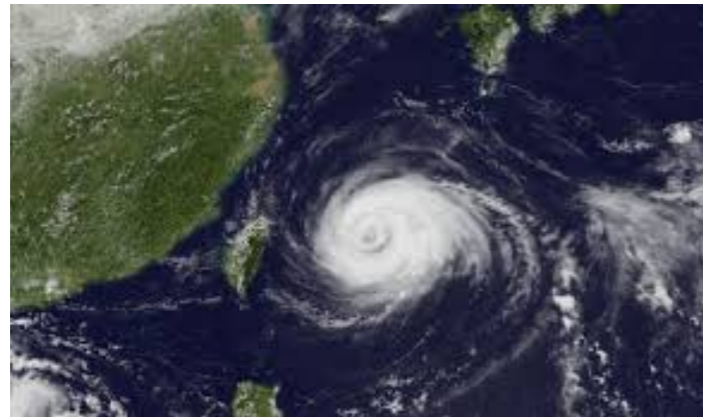
C

Latini village.

Answer :
C!!!!

Natural Disasters

by Andy



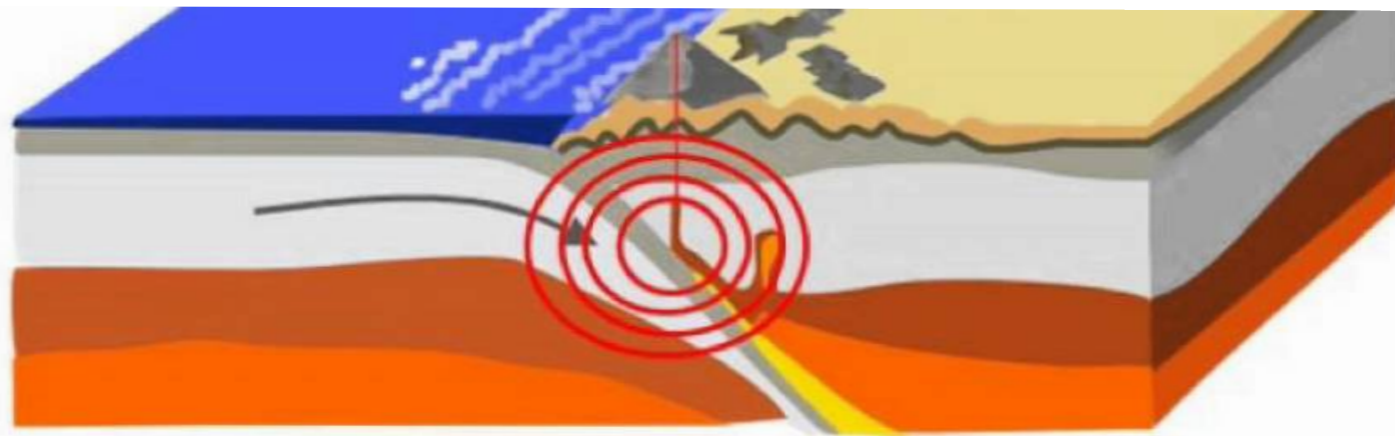
What is a natural disaster?

A natural disaster is a dangerous event that comes from nature. The natural disaster that I want talk about is earthquakes.



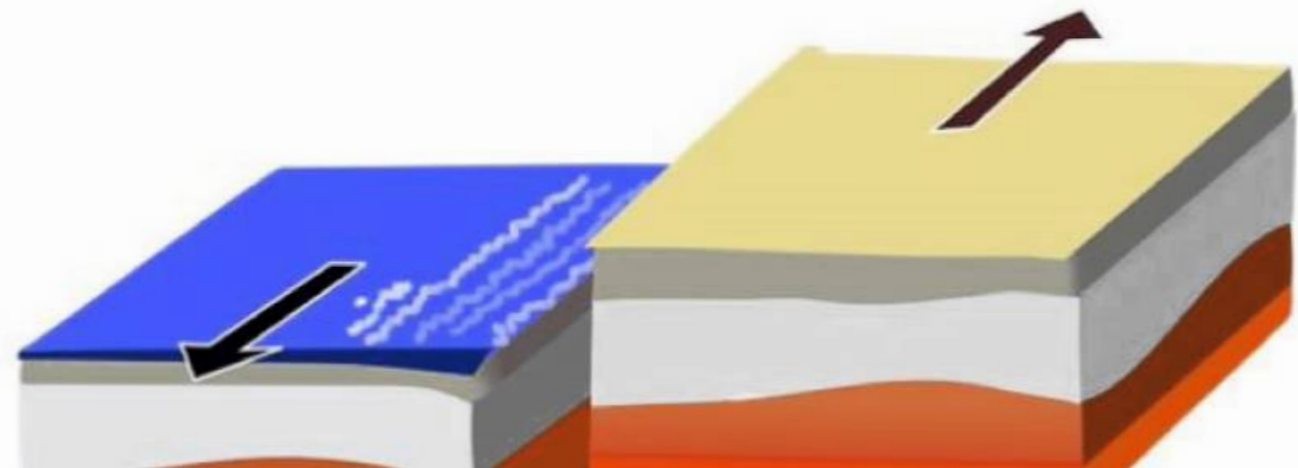
Why do earthquakes happen?

Earthquakes happen when one plate hits another plate, then one plate moves up and the other moves down. So this causes earthquakes.



**One plate
goes under
another plate**

**A plate brush
against
another plate**



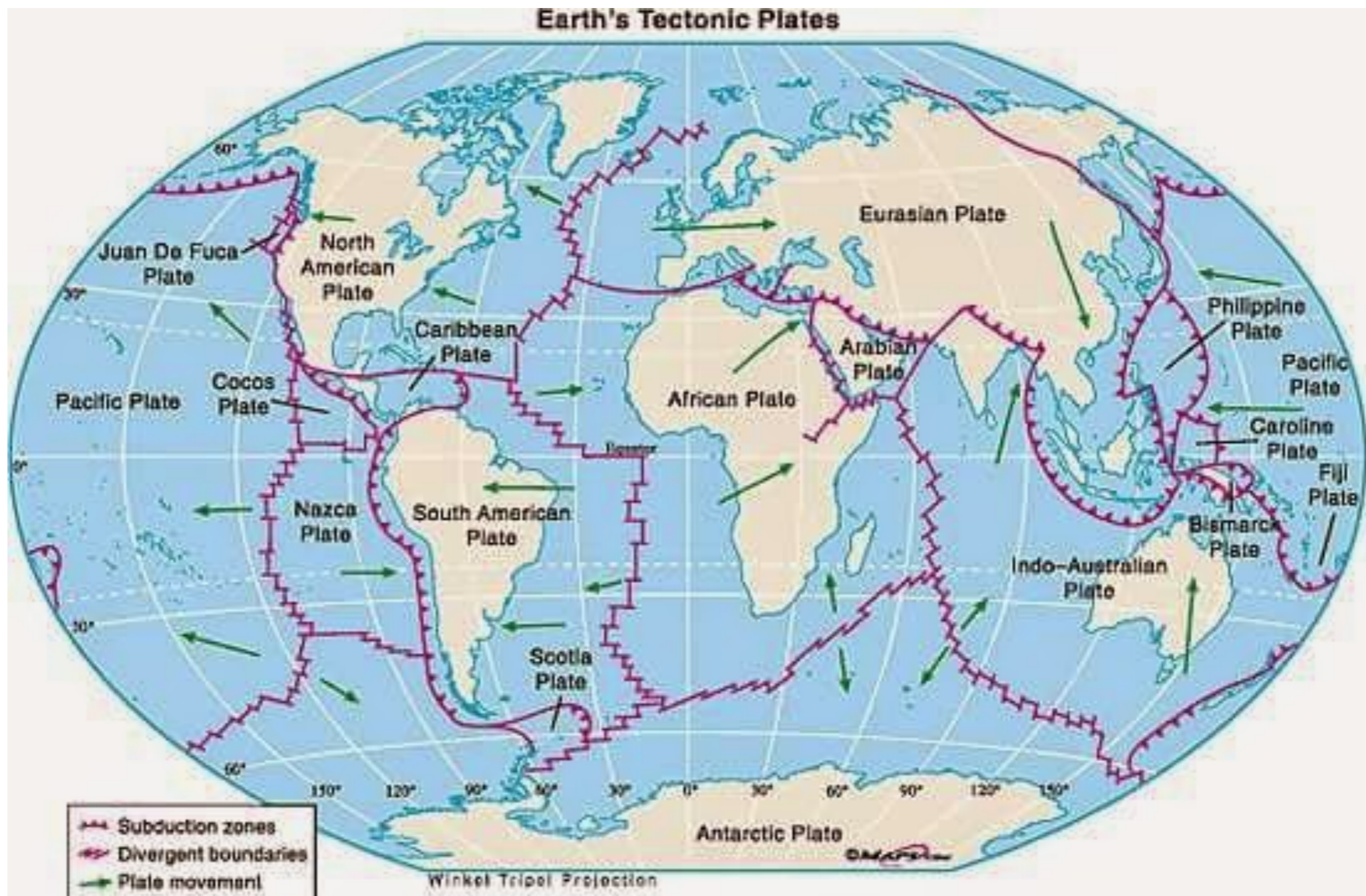
Why are earthquakes dangerous?

Earthquakes are dangerous because houses and buildings could fall down or people could die. Sometimes the roads and bridges will be damaged.



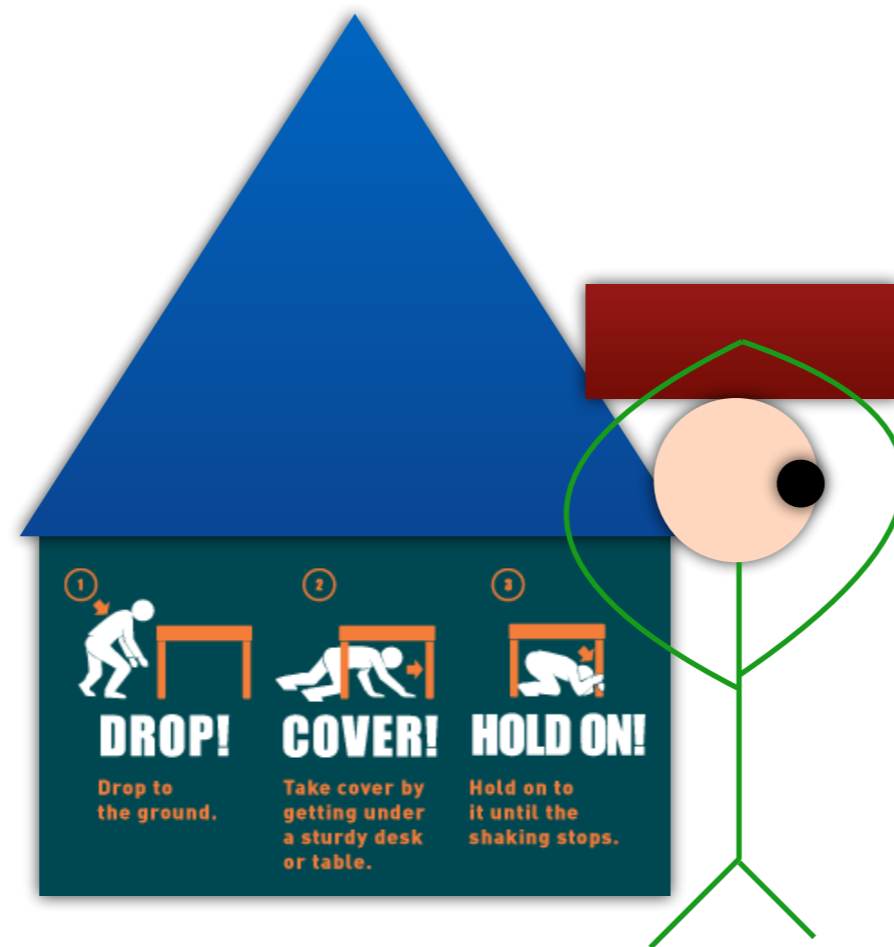
Earth's Tectonic Plates.

The picture below shows the tectonic plates. Taiwan has lots of earthquakes because it is close to two plates, but Japan has more.



How to survive an earthquake?

First, you must find a table and hide under and wait for the earthquake to stop. Then you need to get something thick to put on your head such as a school bag or a book to protect your head if something falls down. Next, you must get out of the building as quickly as possible. This is a best way to survive an earthquake.



Tsunami.

A tsunami happens in the ocean after an earthquake. It is like a huge wave. A tsunami causes lots of damage to buildings and can kill lots of people.



2005 Tsunami.

In 2005 there was an earthquake in Indonesia. This earthquake made a large and famous tsunami which traveled to Thailand and caused lots of damage. This tsunami killed 149,000 people and 127,000 people are missing.



Hello everyone. Today I am talking about the Mayan Civilization. I hope you enjoy!





By Ariel Lu

When did the Mayan Civilization start and end?

The Mayan civilization started in 2600 BC and ended in 900 AD.



The Maya people used a written language and a numeral system. They were good at art, building, and math. Their priests studied stars and planets, which helped them make calendars.

0	1	2	3	4
	•	••	•••	••••
5	6	7	8	9
—	—•	—••	—•••	—••••
10	11	12	13	14
==	==•	==••	==•••	==••••
15	16	17	18	19
===	===•	===••	===•••	===••••
20	21	22	23	24
• 	•	••	•••	••••
25	26	27	28	29
—•	—••	—•••	—••••	—•••••
Mayan positional number system				



What were their clothes like?



Poor people wore simple clothing. Both around their shoulders when it was cold. Men and women both wore their hair long. Once they were married, both men and women often got tattoos.

What did the Mayan eat?

Maize (corn), sweet potatoes, and chilies were staples of ancient Mayan food.



Much of the Mayan food supply was grown in fields and forest gardens, known as pet kot. The system takes its name from the low wall of stones that surrounds the gardens.

What were their homes like?



The rich people and kings lived inside the city in large palaces made from stone. The poor people lived in huts outside the city near their farms. In many areas the Maya built their huts on top of platforms made from dirt or stone to protect them from floods.

Interesting Facts about Maya Pyramids



Maya pyramids had a flat top.

The pyramids of the Aztecs were very similar to those of the Maya. The main difference was that the Aztec would sometimes build more than one temple on the top of a pyramid. Many times new pyramids were built on top of old pyramids.

Most Beautiful Ancient Mayan Temples

Coba



Coba in Mexico was a large ancient Maya city that was home to about 50,000 inhabitants at its peak. Most of its monuments were built between 500 and 900 AD. Coba contains several large temple pyramids.

Most Beautiful Ancient Mayan Temples



The largest pyramid in Caracol is Canaa (Sky Place), at 43 meters it is still the tallest man-made building in all of Belize.

Most Beautiful Ancient Mayan Temples



Calakmul

Calakmul is a Mayan site hidden inside the jungle. It is one of the largest Mayan cities ever found with over 6,500 ancient buildings . Calakmul's 55 meter high pyramid is by far the largest.



ANCIENT CIVILIZATIONS

ARIEL YEH



WHICH ANCIENT CIVILIZATION?

- Hello everyone. My name is Ariel and today I will be talking about the ancient Egyptian Civilization.



WHAT IS A CIVILIZATION?

- The term civilization means when people live together peacefully in communities.



WHEN DID THE EGYPTIAN CIVILIZATION START AND END?

- It started in 3100 B.C. and ended in 30 B.C.



CLOTH IN ANCIENT EGYPT

- Most young children went around completely naked until they were six years old.
- Poor men wore a loincloth or short kilt.
- Women wore straight dresses with one or two shoulder straps.



HOW MANY PEOPLE WERE THERE?

- The population was between one and two million people but the numbers went up and down so it is difficult to know for sure.



WHAT WAS THE EGYPTIAN CIVILIZATION FAMOUS FOR?

- It was famous for mummies. This is when some people died and the Egyptian people would make them into mummies .
- They believe they can be resurrected. This means they die and will come back to life.



HOW TO MAKE A MUMMY?

- First they removed the organs.
- Then they removed moisture from the body using salt to preserve the body.
- Then wrapped it in linen cloth.
- The body was placed in coffin.

